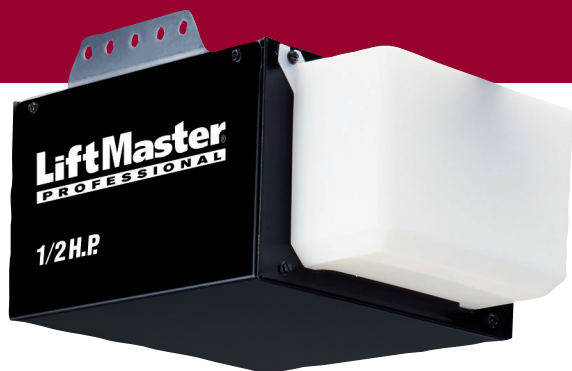


# 1355 / 1356

1/2 HP CHAIN DRIVE GARAGE DOOR OPENER



## Basic Reliability

### Performance

- **P3™ Motors** from LiftMaster® are reliable, durable and powerful – designed specifically for your needs.
- **1/2 HP motor** with industrial-strength chain drive provides steady performance and lifting power.
- **75-watt lighting** with adjustable light time delay for more energy-efficient use.
- **4-year motor** warranty and 1-year parts warranty.

### Safety and Security

- **Security+®** safeguards your household – with every click a new code is sent to the garage door opener so that the door opens only for you.
- **PosiLock®** locks down your door by electronically monitoring against a forced opening.
- **The Protector System®** has safety sensors that project a light beam across the garage door opening, automatically reversing the door if anything interrupts the beam.

### Included Accessories:



#### 1-Button Remote Control (371LM)

Allows you to control a single garage door opener, gate operator or your garage door opener lights and with Security+ rolling code technology, you are assured of a new code with every use.



#### Lighted Door Control Button (75LM)

Enables you to operate your door from inside the garage.

### Optional Accessories:



#### Wireless Keyless Entry (877MAX)

Open your garage door without using a remote control and close it with just the push of a button. You can also program a temporary entry code for friends and service people.



#### Mini 3-Button Remote Control (890MAX)

Allows you to operate up to three garage door openers, gate operators or MyQ® Accessories. Fits on keychain, in a pocket or purse.



#### MyQ Control Panel (888LM)

Allows any LiftMaster Garage Door Opener manufactured since 1998 to be controlled by your smartphone, tablet or computer (when paired with the LiftMaster Internet Gateway) – provides the upgrade needed to utilize Security+ 2.0™ and MyQ Technology.



#### Ceiling Mount (195LM)

Give your garage the style it's been missing by hiding the wires and cords with this sleek ceiling mount. Works in most standard garages.

# 1355 / 1356

1/2 HP CHAIN DRIVE GARAGE DOOR OPENER

## SPEC SHEET STANDARD SPECIFICATIONS

### DIMENSIONS

Installed Length: 124"  
Maximum Door Opening: 7' 6"  
Headroom Clearance Required: 2"  
\*Up to 10' with optional 8' or 10' rails

### CARTONS

Number of Cartons: 2  
Carton 1: Dimensions and Contents:  
- 20" x 12" x 10"  
- Lighted Door Control Button  
- 371LM Remote Control  
- Garage Door Opener Head  
- The Protector System®  
Carton 2: Dimensions and Contents:  
- 10' 4" x 5" x 5"  
- Assembled Solid-Steel T-Rail

### SECURITY+® RADIO CONTROLS

Coding System: Smart Receiver Code Button and Indicator Light  
Operating Range: 150' (approximately)  
Operating Temperature: -40°F to 150°F  
Battery (remote control): 3-Volt  
Frequency: 315MHz  
371LM Standard Remote Control  
Security+ Anti-Burglary Coding

### CONVENIENCE / SAFETY

The Protector System®  
Emergency/Quick Release  
Automatic Trolley Reconnect  
Ventilation/Pet Opening  
Down Safety Reverse  
Up Safety Stop  
Door Open/Beam Broken/Lights On  
PosiLock®

## ELECTRICAL SPECIFICATIONS

### POWER

Voltage: 120V AC, 60Hz;  
Wattage: 540  
Current Rating: 4.5  
UL Listings: Yes  
Length of Line Cord: 4' (3-prong)

### LOGIC TYPE

Solid-State Microcontroller with Built-in Surge Suppressor

### LIGHTING

Number of Bulbs: 1  
Maximum Wattage: 75  
Length of Light Delay: 4 1/2 Minutes  
Type of Light Delay: Solid-State

## MECHANICAL SPECIFICATIONS

### MOTOR

Horsepower: 1/2  
RPM: 1,625  
Thermal Protection: Automatic  
Lubrication: Permanent

### DRIVE MECHANISM

Drive Means: Full Chain  
Reduction Means: Gear 16:1  
Door Linkage: Adjustable Door Arm

### ADJUSTMENTS

Force: Independent External Up and Down  
Limit: External

### TRAVEL RATE

Approximately 7"/Second

### SHIPPING WEIGHTS

Head: 22 lbs.  
Rail: Full Chain—20 lbs.

### MATERIALS

Chassis: Steel  
Rail: Solid-Steel T  
Trolley: Steel

### WARRANTY

4 Year Motor Warranty  
1 Year Parts Warranty

HOMELINK® Compatible (version 4.0 or higher)  
w/QuickTrain™ Technology\*

\*May require an external adapter depending on the model and year of your vehicle.  
Visit [homelink.com](http://homelink.com) for additional information.